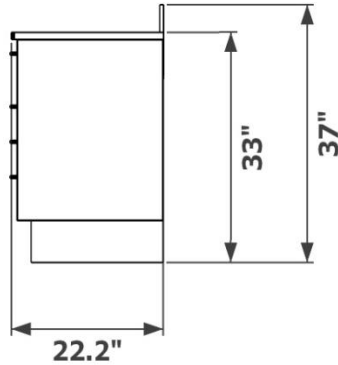
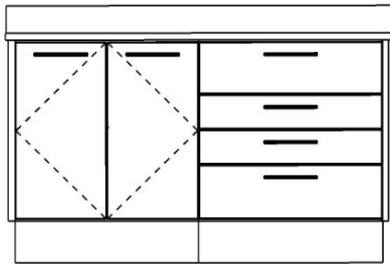


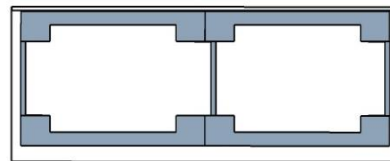
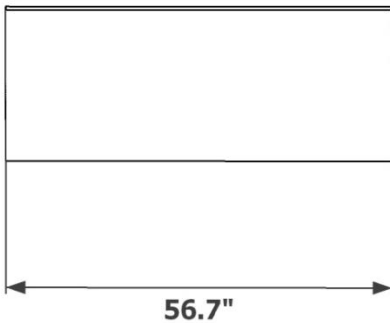


Symmetry Dental Equipment
Symmetry 4.0 Collection
3G - Ancillary Treatment Console (Base Console)
Specification Page

- Structural steel powder coated base with levelers
- Decorative brushed nickel bar pulls
- Soft-close steel drawers
- Soft-close concealed hinge doors
- Solid surface counter top
- Premium embossed laminate fronts and accent panels options



Décor Finish	
Counter Finish	



Grey indicates location of the structural steel base