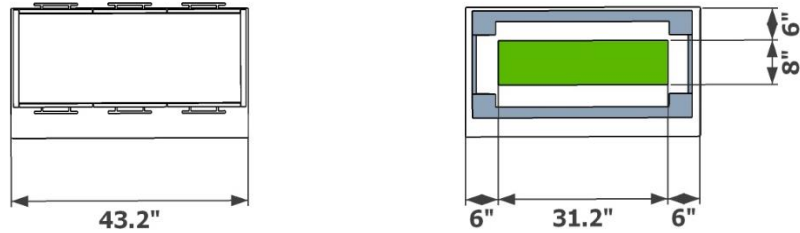
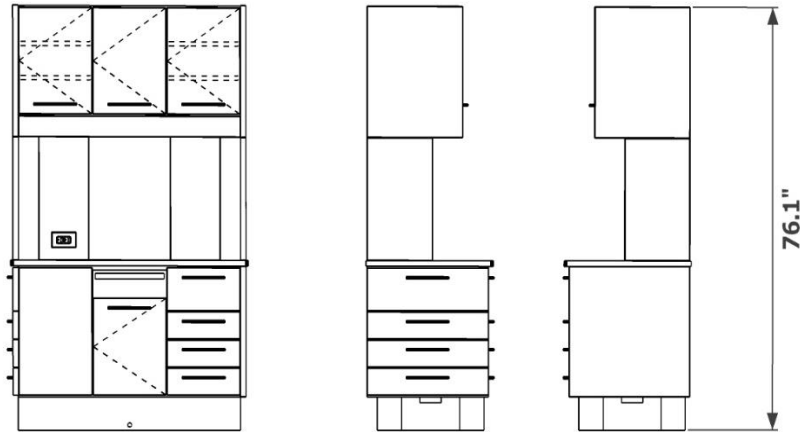




Symmetry Dental Equipment
Symmetry 4.0 Collection
4E - Rear Treatment Console (Free Standing or Wall Mounted)
Specification Page

- Structural steel powder coated base with levelers
- Console can be free standing or wall mount
- Pass through upper cabinets
- Decorative brushed nickel bar pulls
- Soft-close steel drawers
- Soft-close concealed hinge doors
- Vertical chase to allow CPU in upper middle cabinet
- Solid surface counter top
- Premium embossed laminate fronts and accent panels options
- Two hospital grade outlets
- Task lighting



Décor Finish	
Counter Finish	

Grey indicates location of the structural steel base

Green indicates available location for floor based utilities