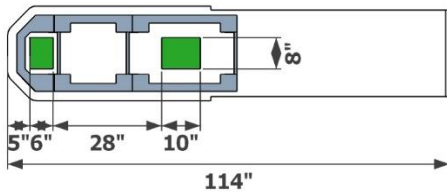
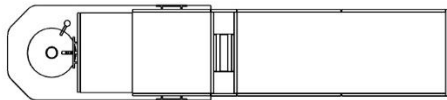
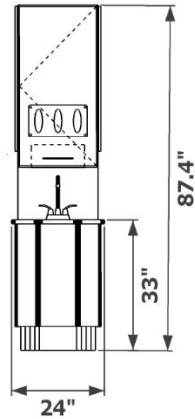
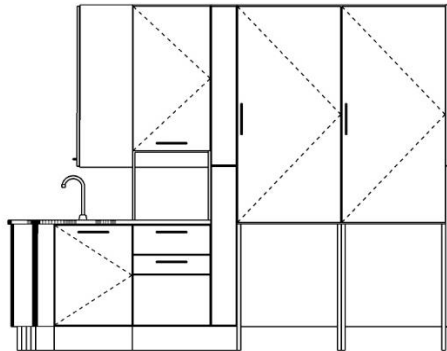




**Symmetry Dental Equipment**  
**Symmetry 4.0 Collection**  
**5D - Island Treatment Console**  
**Specification Page**



- Structural steel powder coated base with levelers in front section
- Decorative brushed nickel bar pulls
- Soft-close steel drawers
- Soft-close concealed hinge doors
- Solid surface counter top
- Premium embossed laminate fronts and accent panels options
- Undermount stainless steel sink with strainer
- Soap pump
- Through top waste opening (waste receptacle not included)
- Triple glove dispensing with ancillary glove storage
- Under console towel dispensing
- Bi-fold pass-through x-ray console
- Four storage drawers - two toward both sides

Décor Finish	
Counter Finish	

*Grey indicates structural steel base.*

*Green indicates available location for floor based utilities.*