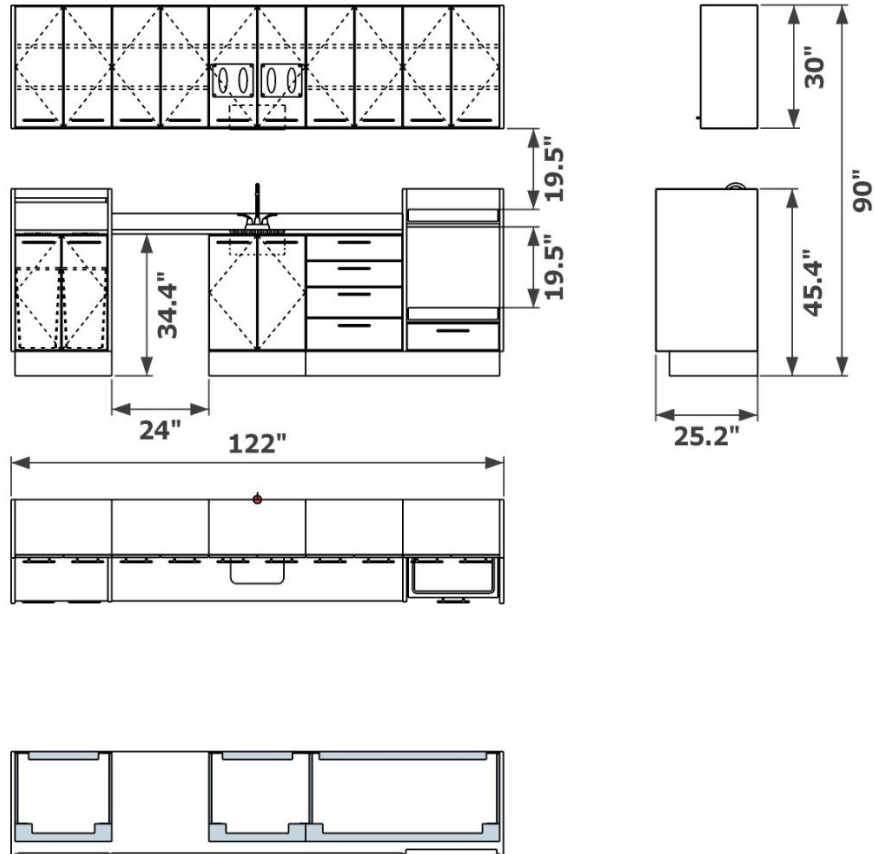




Symmetry Dental Equipment
Symmetry 4.0 Collection
610-B - Reversible Sterilization Console w Dishwasher Location
Specification Page



Grey indicates location of the structural steel base

- Structural steel powder coated base with levelers
- Decorative brushed nickel bar pulls
- Soft-close steel drawers
- Soft-close concealed hinge doors
- Solid surface counter top
- Premium embossed laminate fronts and accent panels options
- Dual through top waste openings (waste receptacle not included)
- Undermount stainless steel sink with strainer
- Quad glove dispensing with ancillary glove storage
- Under console towel dispensing
- Dual pull out solid surface shelves for autoclave storage
- Dishwasher location

Décor Finish	
Counter Finish	