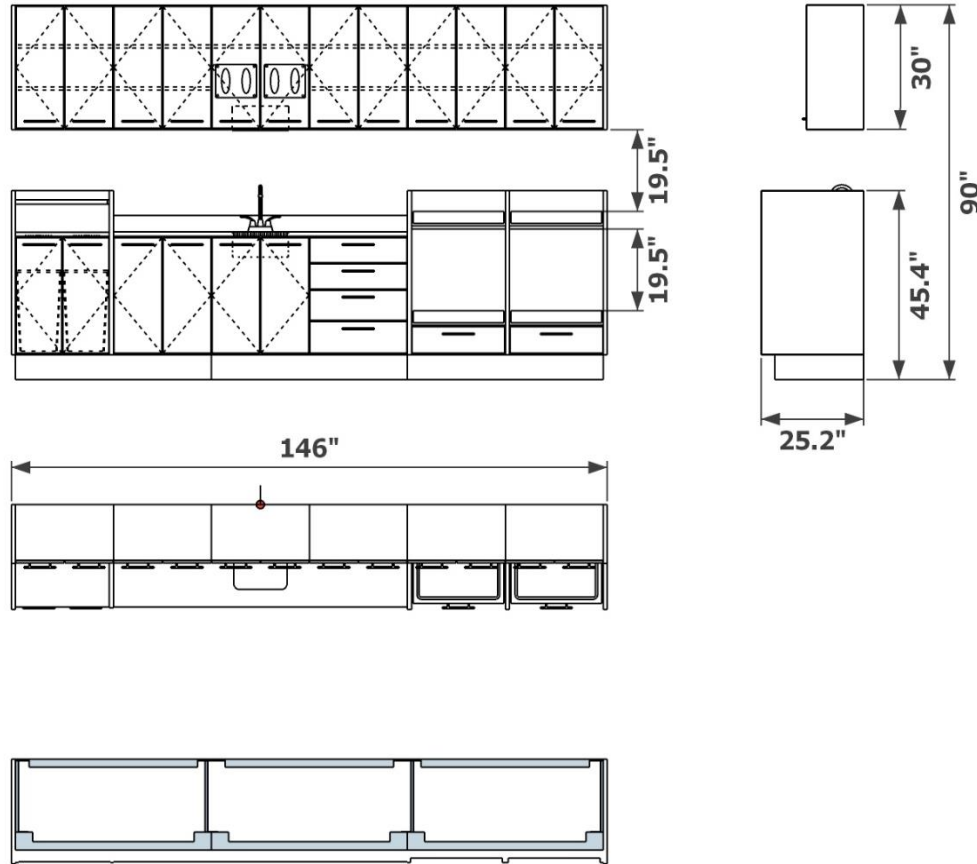




**Symmetry Dental Equipment**  
**Symmetry 4.0 Collection**  
**612-A - Reversible Sterilization Console**  
**Specification Page**



- Structural steel powder coated base with levelers
- Decorative brushed nickel bar pulls
- Soft-close steel drawers
- Soft-close concealed hinge doors
- Solid surface counter top
- Premium embossed laminate fronts and accent panels options
- Dual through top waste openings (waste receptacle not included)
- Undermount stainless steel sink with strainer
- Quad glove dispensing with ancillary glove storage
- Under console towel dispensing
- Quad pull out solid surface shelves for autoclave storage

Décor Finish	
Counter Finish	

Grey indicates location of the structural steel base